

## How to download image file from Dropbox and restore it into Protégé Unit

### Step 1. Download image

1. Download and install Dropbox desktop utility.

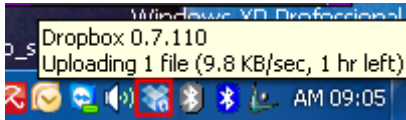
<https://www.dropbox.com/downloading?src=index>

2. Login Dropbox in utility by using the following account:

Email: **support@borgdisplays.com**

Password: **protege**

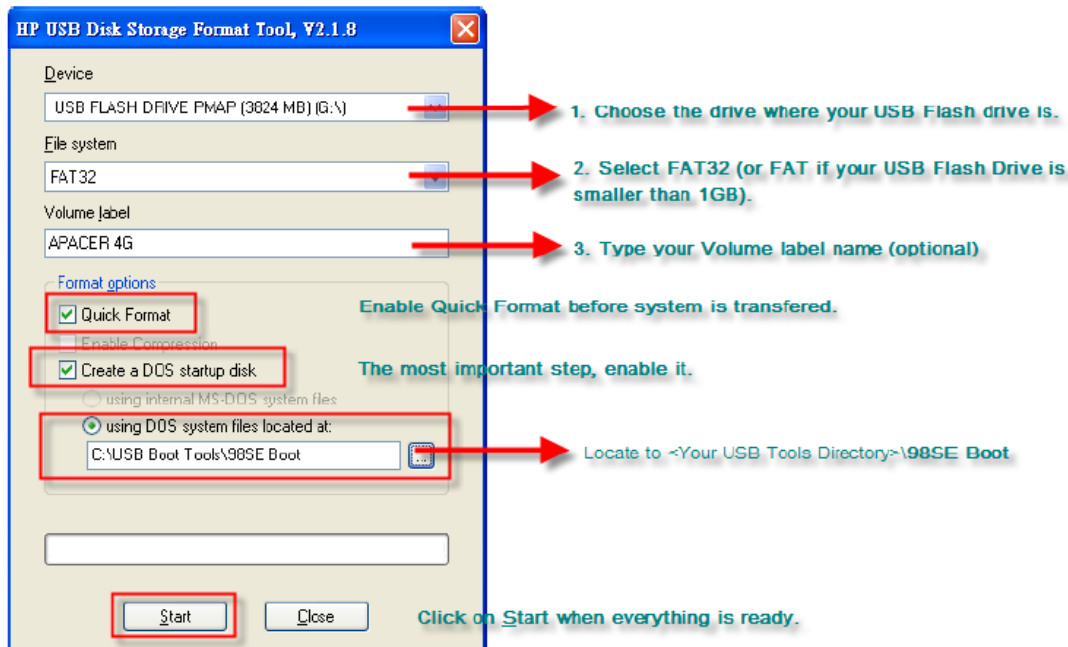
3. Dropbox begins to synchronize folders/files from Internet, move your cursor to Dropbox tray icon so that you can check the current synchronization status, wait until the file is downloaded completely.



4. After folders are synchronized, you can find the image in "Dropbox Folder\XPe Images\374\_XPeSP3\_Net35\_2G.gho" (744,838,508 Bytes, created at 12/22/2010 02:15:02 pm).

### Step 2. Prepare a Bootable USB thumbnail.

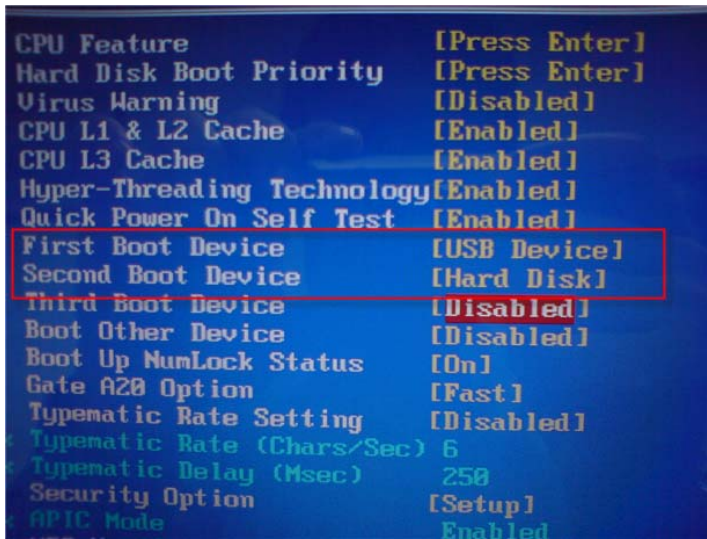
1. You need a USB Flash thumbnail which is **2GB or 4GB**, backup all files on it. (This Flash will be formatted alter.)
2. Download the USB Tool via [http://www.emink.com/files/USB\\_Tool.rar](http://www.emink.com/files/USB_Tool.rar)
3. Extract it to your desktop, plug in your USB thumbnail, then launch **HPUSBFW.exe**.



4. Select all options by following the tips above, then click on "Start" to transfer the boot system onto your USB flash drive, and click "Close" to exit this tool when down.
5. **Copy and over all files in "USB Tool\98SE Boot" to your flash drive again.**
6. Copy 374\_XPeSP3\_Net35\_2G.gho to USB Flash drive, now your USB Flash Drive is ready to use.

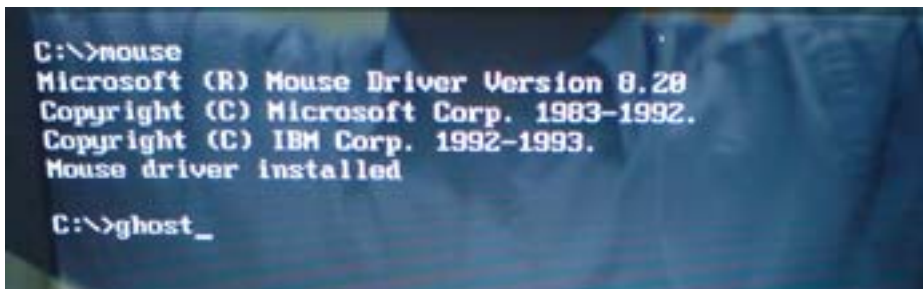
### Step 3. Restore image into Protégé-10A/15A (Pro-10A/15A)

1. Plug in your Flash drive to Pro-10A/15A, connect a PS/2 or USB keyboard too, then boot Pro-10A/15A, hit <Del> to enter BIOS configuration utility.
2. Select "Advanced BIOS Features" option and verify the boot sequence so that your Pro-10A/15A will be booted from USB Flash Drive.



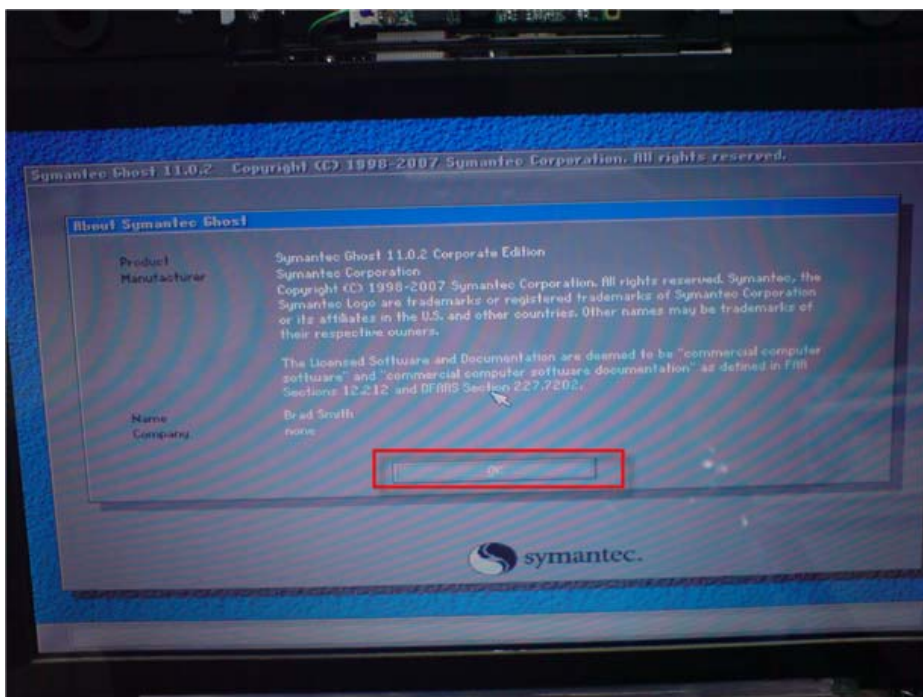
3. Hit <F10> and press "y" to save all changed settings (reboot).
4. After reboot, Pro-10A/15A should boot from USB Flash drive and guide you to MS-DOS environment, then type

c:\> **ghost** <Enter>

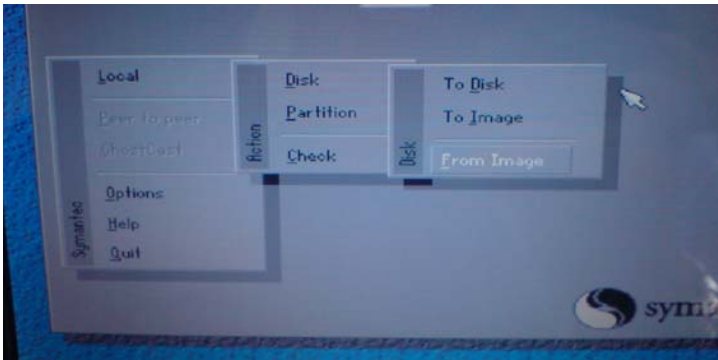


(Note: If it still boot from DOM, change USB Flash Drive to another USB slot and reboot again.)

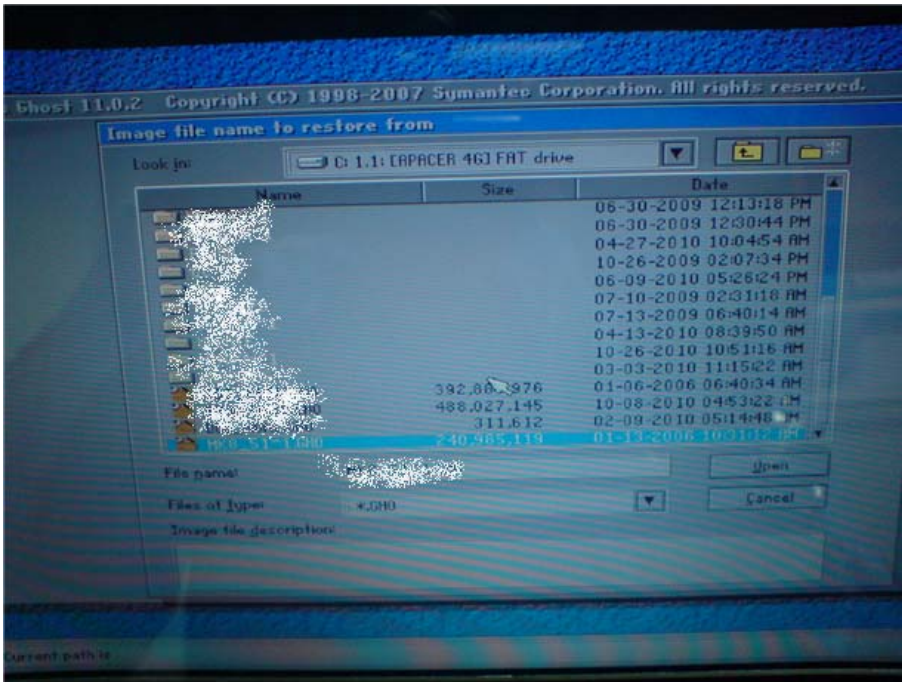
5. Hit "OK" to continue.



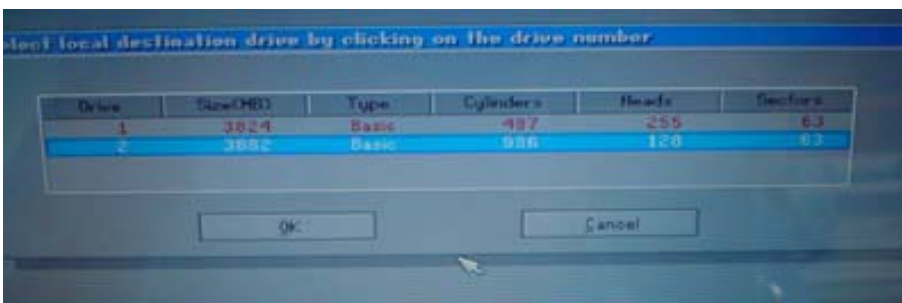
Choose "Local"... "Disk"... "From Image".



Select source image file, locate at 374\_XPeSP3\_Net35\_2G.gho in USB then click "Open".

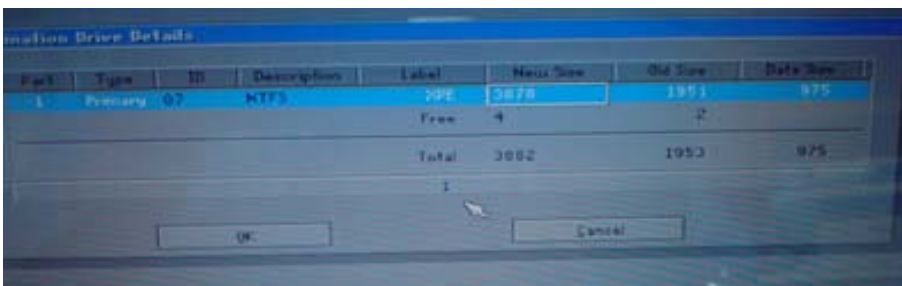


Select the destination drive that you want to restore. (Should be the 2<sup>nd</sup> one), click "OK" to next step.



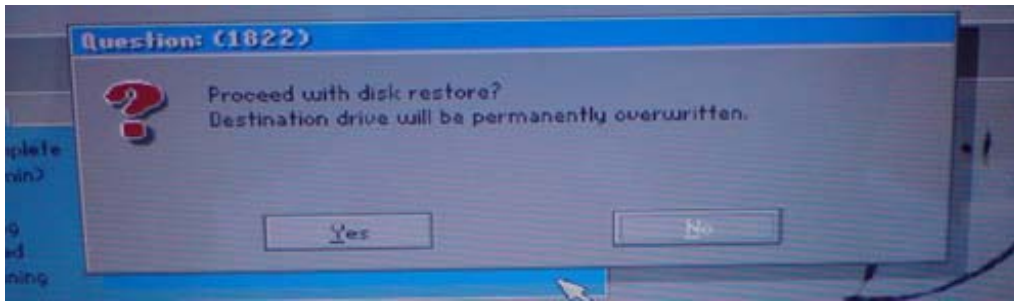
Note. You might see a different screen because the DOM size is different according to your order.

A confirmation about current partition settings in destination drive, click "OK" to proceed.



Note. You might see a different screen because the DOM size is different according to your order.

Click "Yes" to start restore procedure.



6. When restore procedure was done, unplug the USB Flash drive, reboot again and load new XPe image.