

# Getting Started Guide

OmniTouchPro is an intuitive touchscreen interface application for a third-party PC or PC touchscreen that provides access to security, lighting, temperature, audio/video, surveillance cameras, and much more. The product has HAI default interface designs in various resolutions applicable to many PC tablets and touchscreens.

## Hardware Requirements

- Microsoft Windows XP, Vista, or Win7
- .NET Framework 2.0 or higher
- 500 MHz processor (AMD Geode LX800 or Intel Atom z530 equivalent or higher)
- 512 MB of RAM
- 2 GB disk space
- Wired or wireless network adapter
- Internet connection (for activation and updates) Integrated audio/audio card and speakers (if sounds desired)

## Compatibility

- HAI OmniPro II, Omni Ile, Lumina Pro, and Lumina home control systems with Firmware Version 3.0 or later
- Compatible with HAI Home Theater Extender, Camera Server, Music Gateway, and Hi-Fi 2

## Installation

To install the OmniTouchPro software, download a copy to your device from the following web site:

<http://www.homeauto.com/opt>

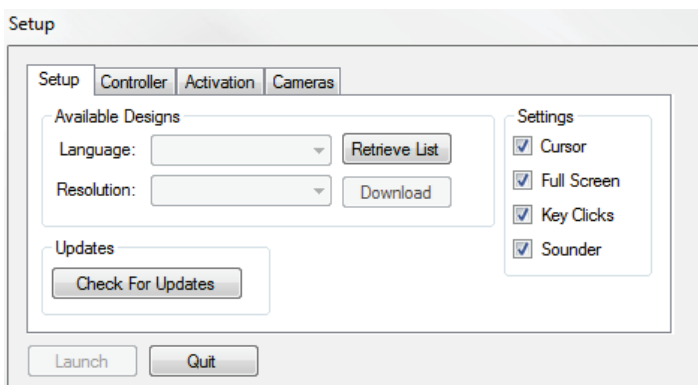
## Getting Started

Before running OmniTouchPro for the first time, there are a few things you should know:

- What is your HAI controller's local network IP address?
- What is your HAI controller's local network port number?
- What is your HAI controller's 128-bit encryption key?

## Initial Setup

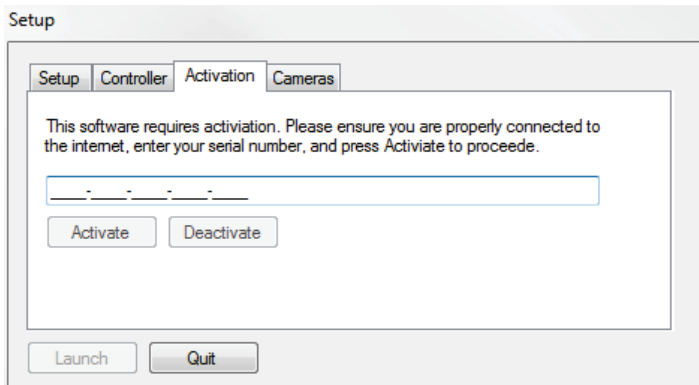
After OmniTouchPro has been installed on your device, double-click the OmniTouchPro desktop icon or select it from the Start menu. The first time that the software runs on the device, the OmniTouchPro Setup page will be displayed.



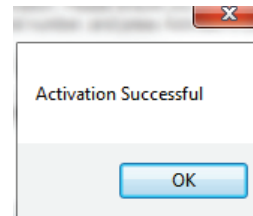
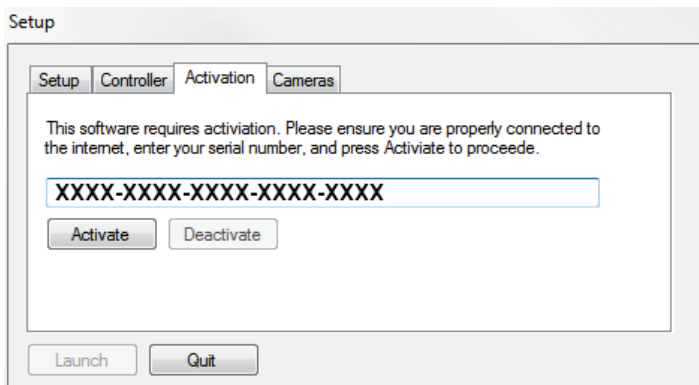
The setup page is used to select the language and resolution of the touchscreen design to be used on the device, select settings, check for upgrades, enter controller connection information, activate and deactivate the software, and configure HAI camera servers.

## Activating the OmniTouchPro Software

To use the OmniTouchPro Software, it must first be activated using the License Key that was purchased. An Internet connection is required for activation. To enter the License Key, click on the **Activation** tab.



Enter your License Key in the space provided and then click the **Activate** button.

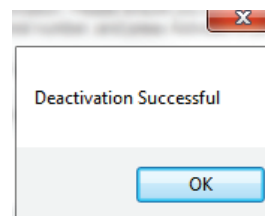
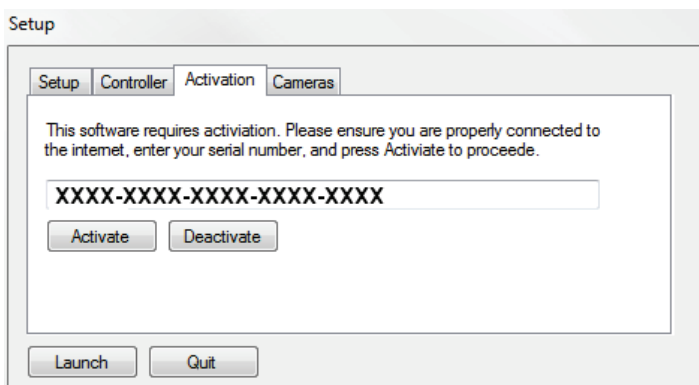


If the License Key was properly entered and the software hasn't been previously activated, the **Activation Successful** dialog will be displayed and the **Launch** button will now be active.

## Activating the OmniTouchPro Software

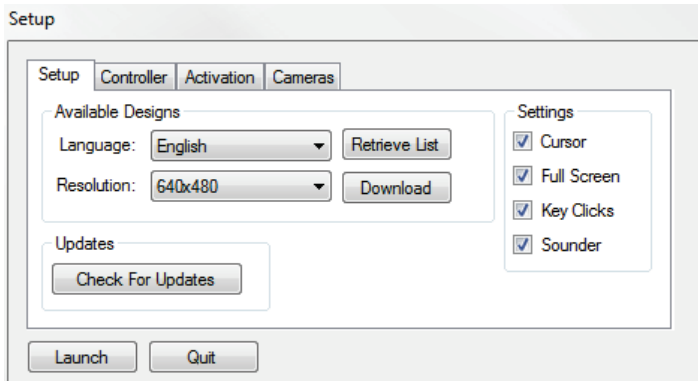
If the software has been activated on a device, but now you would like to transfer it to a different device, the software must be deactivated on the current device before it can run on the new device.

To deactivate the device, click on the **Activation** tab and press the **Deactivate** button.



## Selecting the Touchscreen Design

To select language and resolution for the touchscreen design, click on the **Setup** tab and click on the **Retrieve List** button. A list of available languages and resolutions will be downloaded from the HAI web site.



Select the desired **Language** and **Resolution** from the respective drop-down menus. When the desired language and resolution are selected, press the **Download** button to download the design from the HAI web site.

The following options are available under **Settings**:

**Cursor**: when selected, the mouse pointer will be visible while operating the touchscreen.

**Full Screen**: when selected, the touchscreen interface will occupy the full area of the display.

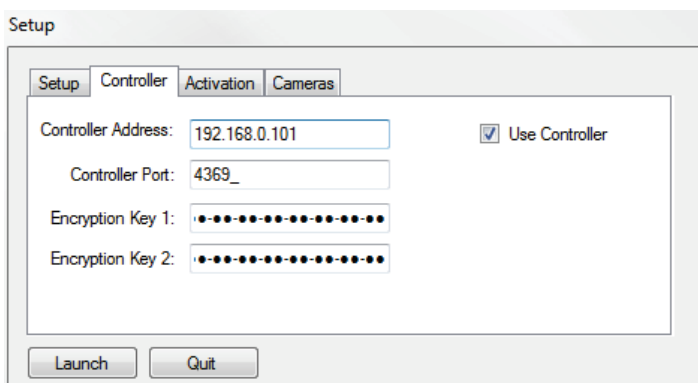
**Key Clicks**: when selected, the touchscreen will produce a short audible tone when a button is pressed on the interface.

**Sounder**: when selected, the touchscreen sounder is enabled. The sounder is used to alert you of errors, troubles, and messages, and emits tones upon entry and exit delays.

To check for the latest updates to the OmniTouchPro Software, click the **Check For Updates** button and follow the instructions on the screen.

## Connecting to the HAI Controller

To connect the OmniTouchPro Software to an HAI controller, click on the **Controller** tab to enter the HAI controller network connection information.



1. **Enter the IP address of the HAI Controller.** The controller's local network IP address is used to identify the HAI controller on the network. The format is a numeric address entered as four numbers separated by periods.
2. **Enter the Port number of the HAI Controller.** The controller's local network port number identifies the logical channel to the HAI controller. In most installations, the default port number can remain the same. Port numbers range from 0 to 65535.

3. **Enter Encryption Key 1 and Encryption Key 2 of the HAI Controller.** The Encryption Keys are used to encrypt and decrypt the data between the HAI controller and OmniTouchPro. This key consists of 16 bytes (that is 16 2-digit values from 0-9 and/or the letters A-F). It is entered in two parts (Key 1 and Key 2) consisting of 8 bytes each, with each byte separated by a hyphen.

If an HAI controller is not being used, deselect the **Use Controller** checkbox. This can be used if you are using an OmniTouchPro to communicate with an HAI Home Theater Extender (HTX), Camera Server, Music Gateway, and/or HAI Hi-Fi 2, but are not connecting to or do not have an HAI controller.

### Adding HAI Camera Servers

To add up to 2 HAI 87A00-1 Camera Servers (4 cameras per HAI Camera Server) to the OmniTouchPro design without using HAI Automation Studio, click on the **Cameras** tab. This allows you to easily configure up to 8 cameras to be displayed on the touchscreen without any additional software or configuration.

Setup

Setup Controller Activation Cameras

Camera Server IP: 192.168.0.103

Port: 80

Camera Server IP:

Port: 80

Launch Quit

1. **Enter the IP address of the first HAI Camera Server.** The Camera Server's IP address is used to identify the HAI Camera Server on the network. The format of the IP address is a numeric address entered as four numbers separated by periods.
2. **Enter the Port number of the first HAI Camera Server.** The camera server's port number identifies the logical channel to the HAI Camera Server. Port numbers range from 0 to 65535.
3. **Enter the IP address of the second HAI Camera Server.**
4. **Enter the Port number of the second HAI Camera Server.**

### Starting the Touchscreen Interface

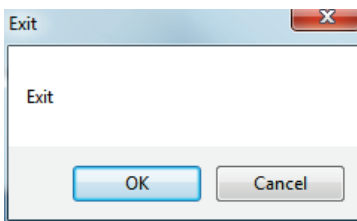
To start the touchscreen interface, press the **Launch** button.



In **Full Screen** mode, the size of the touchscreen design is in its native resolution and is centered on the display.



To exit the OmniTouchPro application, click on any blank space on any page, and hold for 5 seconds. The **Exit** confirmation dialog will be displayed.



Press **OK** to exit the application.

From this point forward, whenever the program is launched using the desktop icon, the OmniTouchPro touchscreen design is displayed.

If it is necessary to adjust any of the items on the Setup page, you can start Setup at any time by selecting **OmniTouchPro Setup** from the Start menu.

## Appendix A – Terminology

Appendix A contains definitions and explanations for terms used throughout this documentation.

- HAI Controller IP Address
- HAI Controller Port Number
- HAI Controller Encryption Key

### HAI Controller IP Address

The controller's local network IP address is used to identify your HAI controller on the local network. The controller's IP address is a 32-bit numeric address written as four numbers separated by periods. An IP address has two components, the network address, and the host address. The first two numbers (e.g. 192.168) represent the Class B network address and must be the same as the first two numbers of your local network. The second two numbers (e.g. 0.101) identify a particular host on the local network and may be assigned at random as long as each device on the local network has a unique address.

The Controller IP Address can be found on an HAI console, under Setup->Miscellaneous.

See also: Network Diagram

### HAI Controller Port Number

The controller's local network port number identifies the logical channel to the HAI controller. For example, port 80 is used for HTTP traffic; the controller's local network port number is used for Omni-Link traffic. In most installations, the default port number can remain the same. Port numbers range from 0 to 65535. Port numbers 0 to 1024 are reserved for designated services and should not be used. The default port number is 4369.

OmniTouchPro communicates using Transmission Control Protocol, or TCP. When enabling port forwarding in your router, be sure to select either TCP, or both TCP and UDP depending on what other products need to access the controller.

The Controller IP Address can be found on an HAI console, under Setup->Miscellaneous.

### HAI Controller Encryption Key

Encryption and decryption of data between the HAI controller and OmniTouchPro is based on the Advanced Encryption Standard (AES) using a 128-bit cryptographic key. This key consists of 16 bytes (that is sixteen 2-digit values from 0-9 and/or the letters A-F). It is stored in the controller in two parts (PT 1 and PT 2) consisting of 8 bytes each.

The Controller Encryption Key can be found on an HAI console, under Setup->Miscellaneous.

## Troubleshooting

Error Message / Symptom	Action
When attempting to activate, OmniTouchPro displays: "Unable to Activate"	The software was already activated on a different device. First deactivate the software from the other device, and then activate it on the new device.
When attempting to connect, OmniTouchPro displays: "Controller Session Terminated"	The encryption key you entered in setup is incorrect.
When attempting to connect, OmniTouchPro displays: "Connection Timed Out"	OmniTouchPro timed out waiting for a response from your controller. Check: <ul style="list-style-type: none"><li>• Network Address</li><li>• Port</li></ul>

**End User License Agreement**  
**PLEASE READ ENTIRE AGREEMENT BEFORE CONTINUING**

**Home Automation Inc. End User License Agreement:**

NOTICE TO USERS: CAREFULLY READ THE FOLLOWING LEGAL AGREEMENT. THIS SOFTWARE IS LICENSED, NOT SOLD. USE OF THE "OmniTouchPro" SOFTWARE (HEREINAFTER REFERRED TO AS "SOFTWARE") PROVIDED WITH THIS AGREEMENT, WHOLE OR IN PART, CONSTITUTES YOUR ACCEPTANCE OF THESE TERMS. IF YOU DO NOT AGREE TO THE TERMS OF THIS AGREEMENT, DO NOT INSTALL AND/OR USE THIS SOFTWARE. USE OF THIS SOFTWARE IS CONDITIONED UPON COMPLIANCE BY USER WITH THE TERMS OF THIS AGREEMENT.

1. LICENSE GRANT. Home Automation, Inc. grants you a license to concurrently use one copy of the version of the SOFTWARE on any one system for as many licenses as you purchase. "You" means the company, organization, entity, or individual whose funds are used to pay the license fee. "Use" means storing, loading, installing, executing or displaying the SOFTWARE on a user workstation, or server according to SOFTWARE type later in this license agreement.

END USER APPLICATION: "End User Application" means the SOFTWARE of a type that is designed to be used on a workstation computer to perform a function or type of work. The SOFTWARE that is an End User Application is licensed on a per user basis, with one license per each user. You may not modify the SOFTWARE or disable any licensing, control, or copyright features of the SOFTWARE except as an intended part of the SOFTWARE's user features. You may not deploy, distribute, share, or disseminate the SOFTWARE to other companies, organizations, entities, or individuals. If the SOFTWARE is purchased by a company or organization, rights to use the software may be assigned (and reassigned) to individual employees, contractors, or members of the company or organization, as long as the relationship of at least one user license for each user is maintained at all times for the version of the SOFTWARE in use.

2. OWNERSHIP. The SOFTWARE is owned and copyrighted by the legal company HOME AUTOMATION, INC., incorporated under the laws of the State of Louisiana in the U.S.A. Your license confers no title or ownership in the SOFTWARE and should not be construed as a sale of any ownership right in the SOFTWARE.

3. COPYRIGHT. The SOFTWARE is protected by copyright law and international treaty provisions. You acknowledge that no title to the intellectual property in the SOFTWARE is transferred to you. You further acknowledge that title and full ownership rights to the SOFTWARE will remain the exclusive property of HOME AUTOMATION, INC. and you will not acquire any rights to the SOFTWARE except as expressly set forth in this license. You agree that any copies of the SOFTWARE will contain the same proprietary notices which appear on and in the SOFTWARE.

4. REVERSE ENGINEERING. You agree that you will not attempt to reverse compile, modify, translate, or disassemble the SOFTWARE in whole or in part.

5. NO OTHER WARRANTIES. HOME AUTOMATION, INC. DOES NOT WARRANT THAT THE SOFTWARE IS ERROR FREE. HOME AUTOMATION, INC. DISCLAIMS ALL OTHER WARRANTIES WITH RESPECT TO THE SOFTWARE, EITHER EXPRESS OR IMPLIED, INCLUDING BUT NOT LIMITED TO IMPLIED WARRANTIES OF MERCHANTABILITY, FITNESS FOR A PARTICULAR PURPOSE AND NON-INFRINGEMENT OF THIRD PARTY RIGHTS. SOME JURISDICTIONS DO NOT ALLOW THE EXCLUSION OF IMPLIED WARRANTIES OR LIMITATIONS ON HOW LONG AN IMPLIED WARRANTY MAY LAST, OR THE EXCLUSION OR LIMITATION OF INCIDENTAL OR CONSEQUENTIAL DAMAGES, SO THE ABOVE LIMITATIONS OR EXCLUSIONS MAY NOT APPLY TO YOU. THIS WARRANTY GIVES YOU SPECIFIC LEGAL RIGHTS AND YOU MAY ALSO HAVE OTHER RIGHTS WHICH VARY FROM JURISDICTION TO JURISDICTION.

6. SEVERABILITY. In the event of invalidity of any provision of this license, the parties agree that such invalidity shall not affect the validity of the remaining portions of this license.

7. NO LIABILITY FOR CONSEQUENTIAL DAMAGES. IN NO EVENT SHALL HOME AUTOMATION, INC. OR ITS SUPPLIERS BE LIABLE TO YOU FOR ANY CONSEQUENTIAL, SPECIAL, INCIDENTAL OR INDIRECT DAMAGES OF ANY KIND ARISING OUT OF THE DELIVERY, PERFORMANCE OR USE OF THE SOFTWARE, EVEN IF HOME AUTOMATION, INC. HAS BEEN ADVISED OF THE POSSIBILITY OF SUCH DAMAGES. IN NO EVENT WILL HOME AUTOMATION, INC. BE LIABLE FOR ANY CLAIM, WHETHER IN CONTRACT, TORT OR ANY OTHER THEORY OF LIABILITY, EXCEED THE LICENSE FEE PAID BY YOU, IF ANY.

8. GOVERNING LAW. This license will be governed by the laws of United States of America. The United Nations Convention on Contracts for the International Sale of Goods is specifically disclaimed.

9. NON-DISCLOSURE. You agree to hold confidential or proprietary information or trade secrets, including, but not limited to this SOFTWARE ("confidential information") in trust and confidence and agrees that it shall be used only for the contemplated purposes, shall not be used for any other purpose, or disclosed to any third party.

9. ENTIRE AGREEMENT. This is the entire agreement between you and HOME AUTOMATION, INC. which supersedes any prior agreement or understanding, whether written or oral, relating to the subject matter of this license.